

# Marion



## EDUCATION

by school district

### Marion County

Total District Enrollment	2155
Accountability	C
School District Poverty	36.7%
Passed 3rd Grade Reading Assessment	94.7%
Out-of-School Suspension Rate	10.9%
In-School Suspension Rate	15.8%
Total Suspension	20.6%
Kindergarten Readiness Score	490
Chronic Absence <small>(missed ≥ 10% of School Year)</small>	13.2%

### Columbia

Total District Enrollment	1817
Accountability	B
School District Poverty	41.5%
Passed 3rd Grade Reading Assessment	93.0%
Out-of-School Suspension Rate	7.4%
In-School Suspension Rate	0.3%
Total Suspension	7.6%
Kindergarten Readiness Score	486
Chronic Absence <small>(missed ≥ 10% of School Year)</small>	13.8%

## DEMOGRAPHICS

**Total Population**  
26,449

**Total Births**  
310

**White**  
66.3%

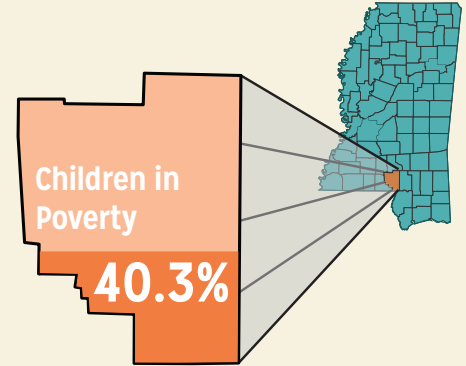
**Black**  
32.2%

**No Parent Employed**  
16.4%

**Children in Single-Parent Families**  
45.7%

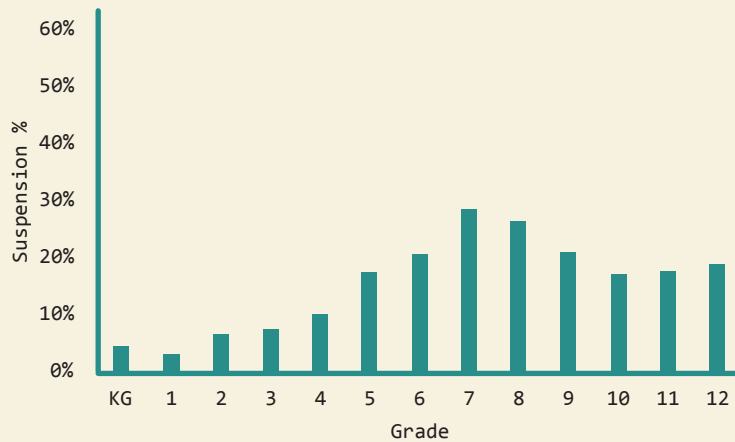
**Poverty All Ages**  
30.4%

**Mothers without High School Diploma**  
17.7%



## SUSPENSIONS

Suspension Rates (ISS & OSS) by Grade (2014)



Suspension Rate (ISS & OSS; 2011 - 2014)

